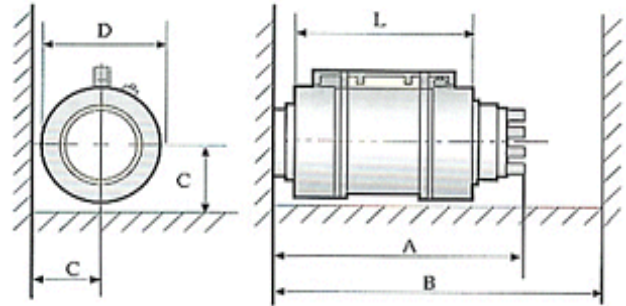


Light Weighted Double Acting Hollow Hydraulic Cylinders



The large work force (up to 400 tons) along with the small size makes this series of cylinders ideal for heavy duty applications. These cylinders offer a world class technology and quality at very competitive prices.

Features:

- both pull and push forces
- double acting
- high force to weight ratio
- small dimensions
- excellent seal
- reliable and durable

Double acting cylinders have the advantage over single acting cylinders of being able to retract the piston quickly and are ideal therefore for high-cycle pulling applications.

The YCWB series hollow hydraulic cylinders are specially designed to have light weight and small size. The high force to weight ratio as well as the large center hollow diameter of the cylinders makes this series the best among the competing products.

Applications:

Hollow cylinders are used as the power component within hydraulic puller sets, for pre-stressing of anchor bolts, removing of axles, shafts, bushings, extracting of tubes, as well as for heavy duty pulling, lifting, positioning, supporting or leveling applications.

High tonnage cylinders are found in nearly all areas of industrial activity like steel production, heavy machine manufacturing, civil engineering, ship building, mining, off-shore industry or testing laboratories. Further applications are lifting and moving of large machinery, steel construction, bridges or similar loads, supporting of buildings and foundations.

Model Number	YCW60B	YCW100B	YCW150B	YCW250B	YCW400B
Cylinder Capacity tons (KN)	60 (600)	100 (973)	150 (1492)	250 (2480)	400 (3956)
Operation Pressure MPa (bar)	52 (520)	51 (510)	50 (500)	54 (540)	52 (520)
Advance Effective Area inch ² (cm ²)	17.83 (115)	29.57 (190.8)	46.19 (298)	71.18 (459.2)	117.91 (760.7)
Retract Effective Area inch ² (cm ²)	3.29 (21.2)	12.04 (77.7)	21.39 (138)	43.43 (280.2)	71.18 (459.2)
Retract Pressure MPa (bar)	< 25 (250)	< 25 (250)	< 25 (250)	< 25 (250)	< 25 (250)
Center Hole Dia. inch (mm)	2.36 (60)	3.07 (78)	4.72 (120)	5.51 (140)	6.89 (175)
Stroke inch (mm)	8(200)	8(200)	8(200)	8(200)	8(200)
Weight lb (Kg)	68 (31)	143 (65)	238 (108)	362 (164)	595 (270)
Dimensions (L)x(D) inch (mm)	13.58 x 6.69 (345 x 170)	14.57 x 8.43 (370 x 214)	14.57 x 11.22 (370 x 285)	14.96 x 13.54 (380 x 344)	15.75 x 17.0 (400 x 432)
Smallest Working Space (B x C) inch (mm)	43.43 x 5.04 (1103 x 128)	48.03 x 5.91 (1220 x 150)	49.21 x 7.48 (1250 x 190)	50 x 8.66 (1270 x 220)	51.97 x 10.43 (1320 x 265)
Length (A) inch (mm)	21.77 (553)	22.44 (570)	22.44 (570)	23.23 (590)	24.41 (620)